

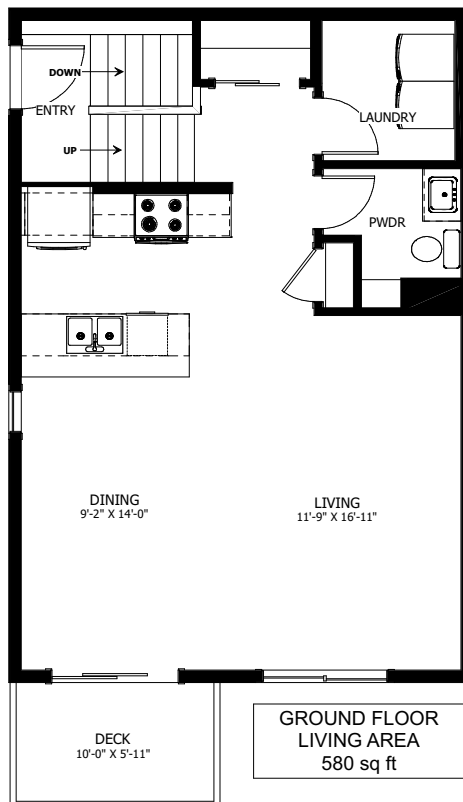
# THE FOURPLEX



**WESTWOOD**  
H E I G H T S

3 BED - 1.5 BATH

22'-0" X 32'-0"



**NEW DAWN**  
DEVELOPMENTS

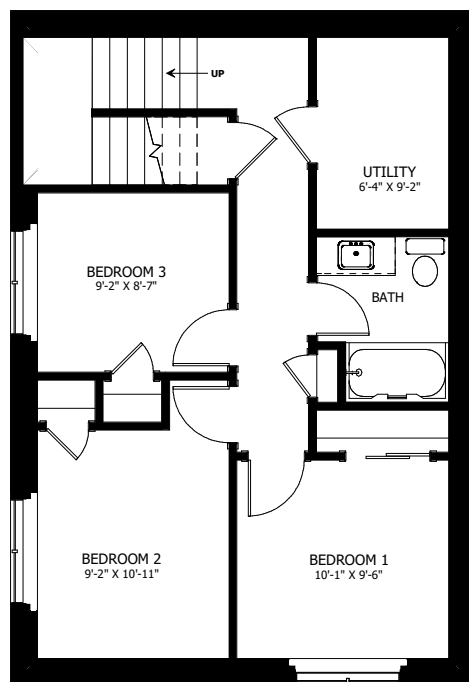
CALL US TODAY: 250-489-1519  
[WWW.NEWDAWNDEVELOPMENTS.COM](http://WWW.NEWDAWNDEVELOPMENTS.COM)

### FLOOR PLAN HIGHLIGHTS:

- POWDER ROOM ON MAIN FLOOR
- FRONT DECK
- LARGE WINDOWS
- EATING BAR IN KITCHEN
- OPEN SHELVES IN POWDER ROOM
- PANTRY CLOSET

### OPTIONAL UPGRADES:

- 2 BEDROOM BASEMENT CONFIGURATION WITH ENSUITE & WALK-IN CLOSET
- U-SHAPED KITCHEN WITH ADDITIONAL CABINETS
- FIREPLACE IN LIVING ROOM



**BASEMENT  
LIVING AREA  
704 sq ft  
INCLUDING STAIRWELL**



**NEW DAWN  
DEVELOPMENTS**

PLANS AND ELEVATIONS ARE APPROXIMATE AND DISPLAY NON-STANDARD FEATURES.  
ELEVATIONS MAY VARY BY COMMUNITY & THE BUILDER RESERVES THE RIGHT TO  
MAKE MODIFICATIONS WITHOUT NOTICE. ALL FLOOR PLANS AND ELEVATIONS ARE  
THE EXCLUSIVE PROPERTY OF NEW DAWN DEVELOPMENTS. ALL RIGHTS RESERVED.  
INCLUDING THE RIGHT OF REPRODUCTION, IN PART OR IN WHOLE.  
LAST UPDATED: APRIL 2024